



**nOKOTECH**

---

# **SIMPLEX 680**

## USER MANUAL

---



SCAN FOR LATEST USER MANUALS



## TABLE OF CONTENTS

- 1. Introduction
- 2. Product description
- 3. Product specifications
- 4. Safety recommendations
- 5. Product installation
- 6. Maintenance
- 7. Storage, disposal & warranty

## 1. INTRODUCTION

Thank you for purchasing the **SIMPLEX 680** LED horticultural fixture and joining the NOKOTECH users club. This manual contains all the information needed to learn, install and use the product. Please read this manual carefully before trying to install and/or operate the SIMPLEX 680 fixture. If you are not comfortable installing high-performance lighting systems, you should always look for the services of a qualified professional.

We highly recommend you to check for the latest version manual on our webpage [www.nokotech.co.uk/support](http://www.nokotech.co.uk/support). At the end of this manual, you will find the date of the last edit.

We hope to get your feedback no matter it is good or bad. Your valuable reviews help us take the products to the next level.

■ **For any information, don't hesitate to contact:**

support@nokotech.co.uk  
+44 7984 917932  
www.nokotech.co.uk

## 2. PRODUCT DESCRIPTION

**SIMPLEX 680** is an electronic horticultural LED fixture powered and controlled by the 600W Electronic Ballast (sold separately). They are high-performance fixtures suitable for any scale full-cycle horticulture cultivation: from propagation and cloning through vegetative growth and blooming stages. In this manual, the product SIMPLEX 680 will be referred to as: '**the fixture**' or '**LED fixture**'.

This LED fixture is for indoor use only (climate-controlled indoor farms and grow rooms). But it is not meant for use in dwellings for general or architectural purposes illumination. The spectrum output for these LED fixtures is specially designed and manufactured for horticulture use only. Any use other is considered unintended use.

**NOKOTECH** can't be held responsible for any possible damage/harm caused by incorrect and/or inadvisable installation and use of the fixture.

### WARNING

This warning sign notes the possibility of injury to the user and/or damage to the product if the user does not perform the procedures as described.

### ATTENTION

This attention sign notes the problems which may occur if the user does not perform the procedures as described.

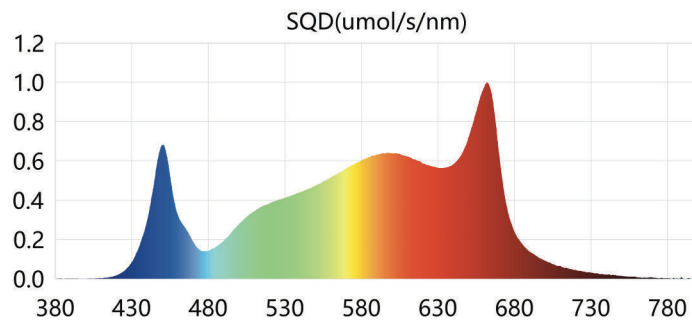
■ **For any information, don't hesitate to contact:**

support@nokotech.co.uk  
+44 7984 917932  
www.nokotech.co.uk

### 3. PRODUCT SPECIFICATIONS

#### SPECIFICATIONS

Dimensions (L.W.H):	1105 x 1067 x 54mm / 43.5 x 42 x 2.1in
Net weight (without ballast):	7.3kg / 16lbs
Max input power:	680W
Input voltage:	220-240V
Dimming:	PWM controller & knob using DIGITAL Pro 600 ballast
Light bars number:	6
Max PPF:	1836 $\mu\text{mol/s}$
Efficacy:	2.7 $\mu\text{mol/J}$
LED diodes:	AMTC (white) & Ledestar (red)
Max ambient temperature:	35°C / 95°F
Lifetime:	>50.000h



SIMPLEX 680 fixture uses high quality very efficient AMTC (white) and Ledestar (red) LEDs to create a balanced full spectrum light best suitable for photosynthesis.

■ **For any information, don't hesitate to contact:**

support@nokotech.co.uk  
+44 7984 917932  
www.nokotech.co.uk

## 4. SAFETY RECOMMENDATIONS

### **Please carefully read recommendations and warnings before assembling and using the fixture!**

The installation and use of the fixture is the responsibility of the end user. Incorrect installation can cause damage to the product. The warranty shall become void if the product and/or electronic components are damaged due to incorrect installation.

### **WARNING**

- Always adhere to the local building and electrical codes (local rules and regulations) when installing or using the fixture.
- Do not open and/or disassemble the LED fixture as it contains no serviceable parts inside. Opening and/or modifying the LED fixture can be dangerous and will void the warranty.
- Connect the system only to the power sources of the appropriate voltage using the plug received with the fixture.
- Always switch off the main voltage before commencing installation or maintenance work. Let the fixture cool down for at least 20-30 minutes before proceeding, as it gets hot while operating, especially the heatsink and LEDs.
- Never look directly into the light source while the fixture is turned on. Doing so can cause damage to the eyes. Special glasses are recommended while being in the grow facility with the grow light fixture turned on.
- Do not use the product when either the fixture or its power cable is damaged. Modifications to the cables can lead to unwanted electromagnetic effects, which may damage the product.
- Do not defeat the safety purpose of a grounding or polarized plug by removing ground pins or using unsafe adapters. You may replace the power cable with a correctly rated cable only.
- Protect power cables from being pinched, walked on, or otherwise damaged. Be especially careful where the power cable enters the power outlet and the unit.
- The fixture and power supply are not designed to be submerged in water.
- Do not use the LED fixture near flammable, explosive, or reactive substances. Fixture reaches high temps while in use.

## 4.1 SAFETY RECOMMENDATIONS

### **Please carefully read recommendations and warnings before assembling and using the fixture!**

The installation and use of the fixture is the responsibility of the end user. Incorrect installation can cause damage to the product. The warranty shall become void if the product and/or electronic components are damaged due to incorrect installation.

#### **ATTENTION**

- Never pull the cord to unplug the fixture, pull the plug only.
- Surge suppressors are highly recommended to protect your grow light investment. Power surges are one of the leading causes of premature grow light failure.
- Hang the fixture with a strong cord or chain from both ends. Make sure you have hooks solidly screwed into the studs in the ceiling. The hooks should be rated to hold at least 23 kg (50 lbs) each. Insert expansion anchors into the ceiling if you cannot locate the studs.
- To ensure the safe operation of the LED fixture, it is necessary to control the temperature of the grow room by mechanical ventilation or cooling system to below the maximum ambient operating temperature of 35°C (95°F).
- Do not use sulfur vaporizers or water misters. Sulfur and calcium deposits on LEDs will decrease its efficiency.
- Do not clean the fixture with detergents, abrasives, or other aggressive substances.

■ **For any information, don't hesitate to contact:**

support@nokotech.co.uk  
+44 7984 917932  
www.nokotech.co.uk

## 5. PRODUCT INSTALLATION

### **Please carefully read recommendations and warnings before assembling and using the fixture!**

The installation and use of the fixture is the responsibility of the end user. Incorrect installation can cause damage to the product. The warranty shall become void if the product and/or electronic components are damaged due to incorrect installation.

### **What is included in the box?**

LED fixture (without ballast):	1 unit
Brackets for a ballast:	2 pieces
Screws for the brackets:	8 pieces
Rope ratchets:	4 pieces

### **Preparation for installation**

1. Refer to your light plan. Arrange the place for the fixture to be mounted. Prepare steel cables and appropriate "hangers" or any other tools to hang the fixture, as it will have to hold significant weight.
2. Remove the fixture from the packaging and check the contents. Check if there are no damages and safe to use.
3. Bring any additional tools and/or hardware that may be required to mount the fixture.
4. Switch off the main voltage.

### **WARNING**

- Mounting and installing the fixture must be in accordance with the applicable local laws and regulations.
- Make sure the local cabling can support the voltage and current requirements of the fixture.
- The installer is responsible for correct and safe installation.
- Take caution when handling light bars. Ensure the LED array does not come in contact with sharp objects or force that may damage the diodes. Avoid touching the diodes with your hands to limit degradation, even in a powered-off state.



## 5.1 PRODUCT INSTALLATION

### Fixture installation

The fixture is not equipped with a ballast. When using **DIGITAL 600 / Pro 600** or any other compatible 600W ballast, first connect the fixture and the ballast with a power cable. Only then plug the power cable into the electrical socket.

### WARNING

- Never block the cooling fins on the fixture. In order for the system to properly cool itself, at least 30cm (12in) of clearance above your fixture and 5cm (2in) on all sides is recommended.
- To ensure the safe operation of the LED fixture, it is necessary to control the temperature of the grow room by mechanical ventilation or cooling system to below the maximum ambient operating temperature of 35°C (95°F).
- Hang the fixture to appropriate "hangers" or any other tools rated to hold at least 23 kg (50 lbs) each.

### *When routing the power cord ensure that:*

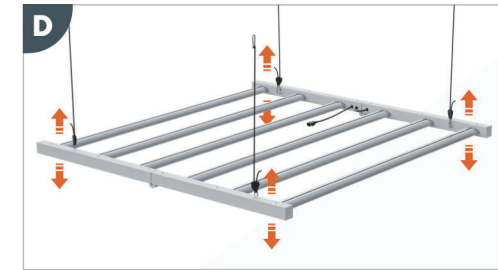
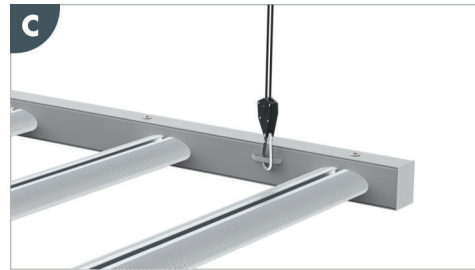
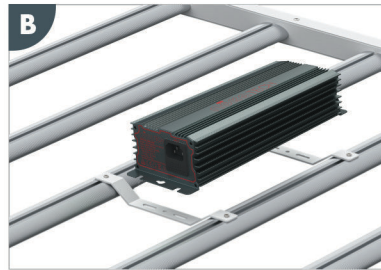
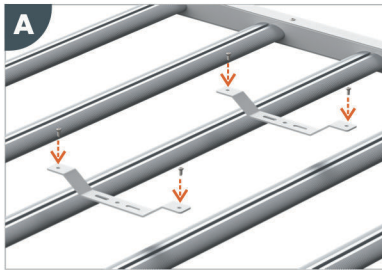
- The cord is not concealed or extended through a wall, floor, ceiling, or other parts of the building structure, such as above a suspended or dropped ceiling.
- The routed cord is not subject to strain, and is protected from physical damage.
- The cord is not permanently affixed to the building structure.

■ **For any information, don't hesitate to contact:**

support@nokotech.co.uk  
+44 7984 917932  
www.nokotech.co.uk

## 5.2 PRODUCT INSTALLATION

1. Fasten the mounting bracket on the LED light strip with 4 screws. (A)
2. Check if the power cord is not damaged and safe to use. Ensure the fixture / ballast is not plugged into the electrical power.
3. Fasten a ballast (not included) on the mounting bracket by 4 screws. Only connect to 600W Digital Ballast. (B)
4. The fixture comes equipped with 4 hanging points. Use Rope Ratchets to hang the fixture on the ceiling of the grow room. (C)
5. Distribute the fixture weight evenly, so the fixture hangs level. Adjust it according to your plants' height. It's recommended to leave at least 15cm / 6in space between the fixture and your canopy. (D)
6. Firstly connect the fixture with a ballast. Only then plug the power cable into the electrical socket, and you are ready to go.



### ATTENTION

Whether you use our brand ballast (DIGITAL 600 / Pro 600) or a third-party product, always read its manual before using the fixture. The fixture supports only 600W digital/electronic HPS ballast.

## 6. MAINTENANCE

In the event that the product is defective or damaged, contact the reseller from whom you purchased the fixture.

### WARNING

- Always switch off the main voltage before commencing installation and/or maintenance work.
- High voltage: risk of fire & risk of shock.
- Do not connect or disconnect the LED fixture under load.
- Don't touch. Fixture reaches high temps while in use. Always wait 20 - 30 minutes for the fixture to cool down.
- Never open or disassemble the product. It will void the warranty and will break the water-tight seal.
- The fixture and power supply are not designed to be submerged in water.

### ATTENTION

- Do not clean the LED fixture with detergents, abrasives, and/or any other aggressive substances, such as solvents, acetone, alcohol, alkaline cleaners, windows cleaners, and similar.
- Regularly check the power cables of the fixture to ensure it is undamaged and safe to use.
- Check the product regularly for the build-up of dust and dirt. Clean the product if necessary.
- To limit degradation, avoid touching the diodes, even in a powered-off state.

### Cleaning the LED fixture

Allow the fixture to cool down to room temperature before starting cleaning it. Do not open the retaining clips when cleaning. The fixture can be cleaned with a feather duster or a soft damp cloth. You should plug in the fixture only after it has been completely dried.

## 7. STORAGE, DISPOSAL & WARRANTY

You can store the LED fixture in a dry and clean environment, with an ambient temperature of 0°C to 45°C. The product must not be discarded as unsorted municipal waste. It must be collected separately for treatment, recovery, and environmentally sound disposal.

### Warranty

NOKOTECH warrants the mechanical and electronic components of the product to be free of defects in material and workmanship if used under normal operating conditions for a period of three (3) years from the original date of purchase.

This Limited Product Warranty does not cover any damage due to: (a) transportation; (b) storage; (c) improper use; (d) failure to follow Product instructions; (e) modifications; (f) unauthorized repair; (g) normal wear and tear (including powder coat); (h) external causes such as accidents, abuse, or other actions or events beyond NOKOTECH's reasonable control.

If the product shows any defects within this period and that defect is not due to user error or improper use we (if you bought from Nokotech Group Ltd) or another reseller you bought from, shall, at its discretion, either replace or repair the product using suitable new or reconditioned products or parts. In case it is decided to replace the entire product, this limited warranty shall apply to the replacement product for the remaining initial warranty period, i.e. three (3) years from the date of purchase of the original product. For service, return the product to the reseller/shop you bought from with the original sales receipt. For more information visit [www.nokotech.co.uk/warranty](http://www.nokotech.co.uk/warranty)



"Watching something grow is marvelous"



Always check for the latest user manuals on our webpage [www.nokotech.co.uk/support](http://www.nokotech.co.uk/support)

Last edited: 11.09.2023

